



Upper Street, London N1 2UD
020 7527 8900
www.islingtonassemblyhall.co.uk

PRODUCTION FACILITIES

CONTENTS

VENUE STAFF	2
VENUE PHOTOS	3
GENERAL INFO	4
AUDIO EQUIPMENT	7
LIGHTING EQUIPMENT	8
LIGHTING PLOT	9
DMX PATCH SHEET	10
STREAMING & RECORDING FACILITIES	11
STAGE PLAN	12
HALL PLAN	13
DRESSING ROOM PLAN	14
PHOTOS	15
BUS PARKING INFO	17
BUS POWER INFO	18
SHOW STOP PROCEDURES	19

VENUE STAFF

Tom Watt - Technical Manager
07925 034565
tom.watt@islington.gov.uk

Lucinda Brown – Head of Islington Assembly Hall
020 7527 6344
lucinda.brown@islington.gov.uk

Kat King - Venue Business Manager
020 7527 7734
kat.king@islington.gov.uk

Louie Staniland - Assistant Venue Manager
020 7527 2311
louie.staniland@islington.gov.uk

Marina Ibileye – Senior Events Coordinator
020 7527 4346
marina.Ibileye@islington.gov.uk

Dave Cameron - Events Coordinator
020 7527 3067
dave.cameron@islington.gov.uk

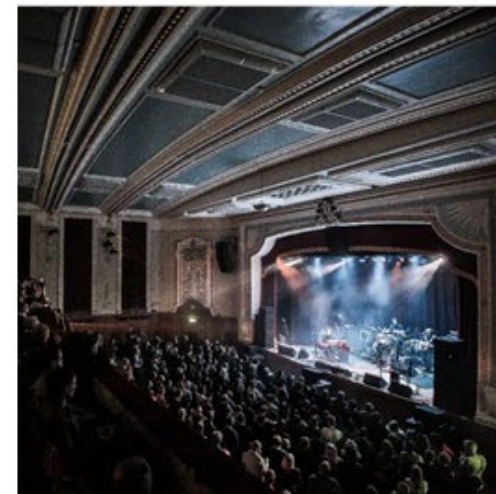
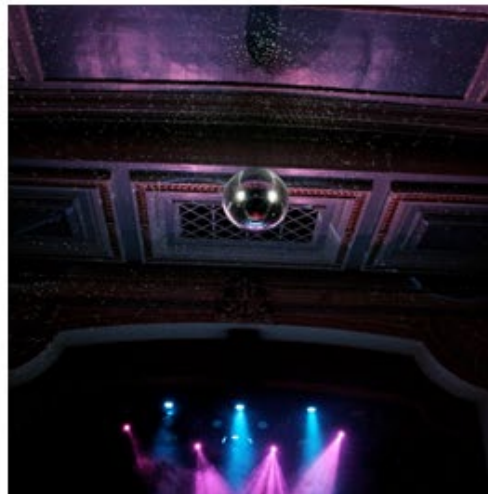
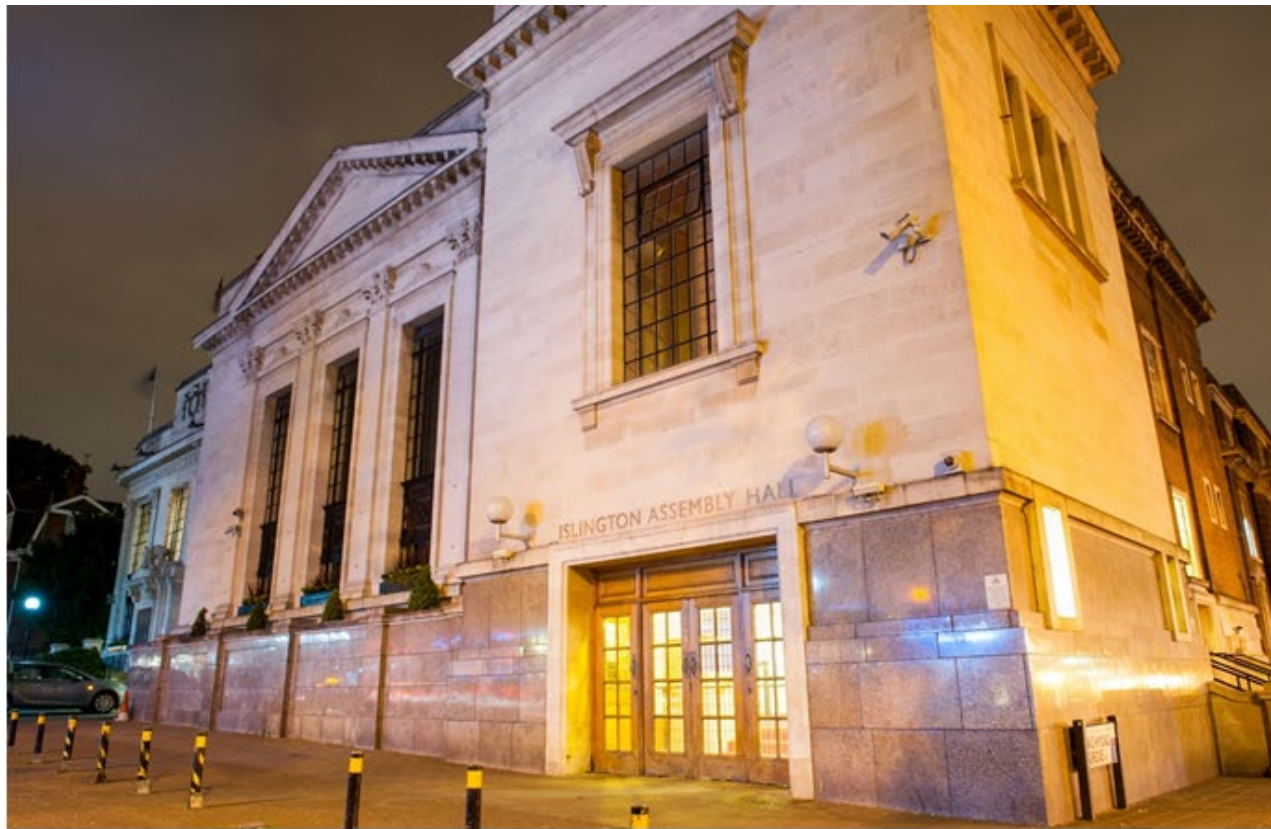
Sammy Winters - Bars and Duty Manager
020 7527 4277
samuel.winters@islington.gov.uk

Ali McCreadie - Assistant Bars and Duty Manager
020 7527 4277
alastair.mccreadie@islington.gov.uk

Alex Natrass - Venue Administrator
020 7527 4207
alexandra.natrass@islington.gov.uk

Eamon Gunn - Events & Operations Assistant
020 7527 3643
eamon.gunn@islington.gov.uk

Matt Rickelton - Events & Operations Assistant
020 7527 7442
matthew.rickelton@islington.gov.uk



GENERAL INFO

dB LIMIT

100dB(A) leq over a one-minute average with peaks of 102dB(A).

The venue PA (which may not be substituted for any other system) is designed to comply with the venue licence.

CAPACITY

950 maximum sellable capacity

732 GA standing / 218 GA seats/standing in balcony

(16+ venue)

FULLY SEATED

433 sellable capacity (with FOH at back of hall, below balcony, cap rises to 452)

230 (249) GA seats downstairs / 203 GA seats in balcony

TIMES

Normal load in time is from 2.30pm. Promoter/rep access from 30 minutes prior to load in, venue cleared by midnight. No early weekend club curfews.

VIP access

A side door entrance is available (on Richmond Grove) that allows access for VIPS to the venue via the dressing room without going through the main hall area. A car can drive into a gated area to drop them off. Please discuss in advance.

CREW

As the venue is Grade II listed, and because of its attachment to, and shared loading entrance with, Islington Town Hall, all crew must be booked through the venue. Please contact us for a quote for local crew, runners and backline/stage techs.

FILMING/RECORDING

Media Rights fee (covers all audio/visual recording within the venue): £1,500 + VAT.

Non-commercial filming - £500, applies to filming with one hand-held camera without an audio feed.

PARKING

There is parking available for up to 5 cars OR two vans OR one tour bus from load-in to load-out (we can often arrange overnight parking of busses, please discuss, usually the space is available from 2am until 2am the following morning).

This must be booked in advance, please supply the registration details. There is no other parking at the venue except for loading/dropping-off. See parking map below.

Useful site for finding parking in the area: www.en.parkopedia.co.uk

BUS POWER

32A single phase (blue) power is available upon advance request.

LOAD IN

Heavy items with wheels can be loaded onto stage via the wheelchair ramp for the Town Hall entrance. Handheld items can be loaded in through the side door straight over the front of the stage.

TOWELS

Stage and shower towels available, all at £2 each per towel. Lost towels charged at £6 each.

SECURITY

Security is provided by APS and booked through the venue, please contact our management team to discuss any specific security requirements.

MERCHANDISE

We do not have a merch charge. A merch seller can be provided for additional cost; please contact the venue in advance if you would like to arrange.

DRESSING ROOMS

There are up to four rooms and a production office available but they must be booked in advance. See below for floor plan. Three of the rooms have shower and toilet facilities.

WIFI

Network: IAH_Backstage

Password available upon arrival

EVACUATION AND SHOW STOP

We ask all visiting artists and crew to familiarise themselves with the venue's evacuation and show stop plan (see below). Please ask the duty manager for more info upon arrival.

BARRIER

There is a "mojo" style barrier covering the front of the stage; 1.8m in front of it. This is included in the venue hire fee and is compulsory for all standing shows.

STORAGE

There is limited space available; if you need to store large amounts of cases or equipment please discuss in advance.

SOUND LEAKAGE - DOORS

It is essential that all doors are closed during sound check. Please check with venue staff before making any noise.

POWER

Our electricity is approx 230V 50Hz. Outlets are 13a UK type "G" or CEEform. All electrical equipment brought into the venue should have a valid PAT certificate. Adapters and transformers for other plug types (Edison, Shuko etc) aren't supplied by the venue.

SMOKE MACHINES

The use of oil based smoke or haze is not permitted. Water based haze is ok.

FIRE SAFETY CERTIFICATES

Fire safety certificates should be made available for all backdrops, drapes, set pieces etc. In the absence of fire safety certificates we can agree to test items (by setting fire to a sample in a controlled setting) - any fabric/material that either holds a flame or you are unable to provide a sample for testing, won't be permitted on stage.

PYROTECHNICS

The use of pyrotechnics or any open flame is not permitted in the venue.

CONFETTI

Foil confetti can be used, there is a clean up charge (£500 +VAT). Paper confetti is not permitted as it stains the wooden floor. Check Co2 restrictions if applicable.

CO2

CO2 effects are permitted with relevant RAMS ahead of show day, a competent & experienced technician should setup and remain on site during use, and CO2 bottles be delivered and collected on the day of show. Maximum burst times are restricted to 20 seconds for 2 canisters.

LASERS

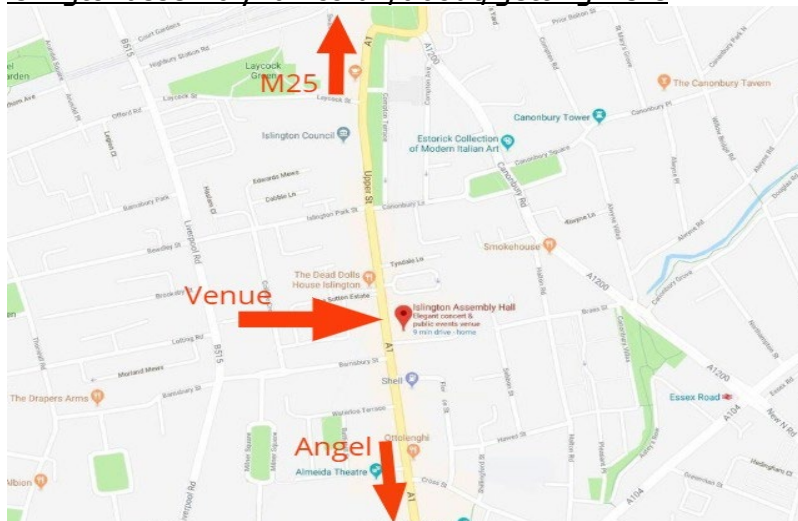
Any use of lasers must be approved by both ourselves and Islington Council. There is a minimum 14 day notice period. Under no circumstance can beams go into the audience (audience scanning) which leaves just the balcony front and ceiling as targets. The duty manager must be provided with a hard-wired emergency stop stage left for the duration of the event, and hard masking (e.g. blackwrap) must be used as well as software masking. The operator will need to demonstrate all looks to the duty manager with a closed auditorium at a mutually convenient time.

FOLLOW SPOTS

The venue does not have any follow spots. If the production would like to supply their own then 6 tickets must be held on the balcony (to allow for seat kills) and the light must be positioned at the bottom of the balcony in the stage left corner.

TRAVEL INFO

islingtonassemblyhall.co.uk/about/getting-here



AUDIO EQUIPMENT

PA SYSTEM

12x JBL VTX-A8 (main left and right array)
2x JBL VTX-A8 (stage level lip fill)
8x JBL B18 (Subs)

Please note the system is configured left/right/front fill/sub and is run from 4 matrix outputs.

AMPLIFIERS & PROCESSORS

5 x Crown I-Tech 4x3500HD Power Amplifiers
1x Soundweb London Blu-80

FOH CONTROL

Midas Pro 2
DL251
48 in 16 out

FOH AREA

FOH is set up on 3m x 2m riser (20cm high) with attached barrier. Please note for seated gigs the FOH area will be at the back of the hall, under the balcony.

MONITOR CONTROL

Soundcraft Vi3000
48 in 16 out inc. listening wedge
(Located stage left)

MONITORS

8 x mono mixes
10 x Martin Audio LE1200 Monitors (including listen wedge)
5 Nova Acoustics X2000 Power Amplifiers
1 Nova Acoustics BA18 Drum Sub driven by EV Q1212 2 amplifier

MICROPHONES

4 Shure Beta 58
8 Shure SM 58
3 Shure Beta 57
6 Shure SM 57
3 AKG C451B
2 AKG C414 XLS
1 Sennheiser MD421
1 Shure Beta 91A
1 Shure Beta 52A
1 Audix D6 Kick
2 Sennheiser E606
6 Sennheiser E904
1 Audix i5

Please note we do not have wireless microphones or in-ear-monitors.

MIC ACCESSORIES

15 Tall Boom Microphone Stands
12 Short Boom Microphone Stands
1 Round Base Stand
Van Damme microphone cables and stage boxes.

DI BOXES

8 BSS AR133 active
1 Radial J48 active
1 Radial PROD2 stereo

Multicore

We do not have a FOH analogue multi system. If touring FOH or monitor control, please discuss with venue in advance.

We have 2 spare CAT6 lines from stage to the rear of the hall but they terminate in wall panels, so we recommend touring productions supply their own multi.

LIGHTING EQUIPMENT

LIGHTING CONTROL

Avolites Quartz with Titan Mobile wing.
3 x DMX Lines.

Two belong to the house rig and a third is available between FOH and stage for touring floor packages.

LIGHTING FIXTURES

See plot for more info.

6 x Martin Mac Quantum Washes
6 x Chauvet Rogue R2X Spots
4 x Martin Mac Aura XB (side and key light)
2x Martin ERA 400 Performance WRM (profile light)
5 x Martin ELP WW (19° lens)
12 x Martin VDO Atomic Dot WRM (Configured separately as "ACLs")
8 x Martin VDO Atomic Dot WRM (Configured in 4 pairs as 2-cell blinders with 60° diffusers)
2x Le Maitre MVS hazers

POWER

Power available for touring production:
1 x **32A** 3 phase supply (5-pin)
CEEform located on stage (stage left)
– with variable RCD, hirer must supply competent operator. Please note phase 1 is usually for audio only; lights can use phase 2 and 3.

MISCELLANEOUS

4 x riser sections are available, each at 2m (w) x 1m (d) 38cm (approx) high.

1 x DJ table at 2m (w) x 0.5m (d) x 1m (h).

Stage dimensions at widest point:
10.7m(w) x 6m(d) x 1.4m(h).

Useable area for sight lines is
7m(w) x 5m(d).

Clearance is about 4.5m to the lowest fixture.

Stage access is stage left only.

Our rear stage backdrop bar is on a winch and can accommodate a maximum banner width of 7.6m and a drop of up to 7.5m, 100kg evenly distributed SWL.

ISLINGTON ASSEMBLY HALL

LIGHTING PLOT

Venue:

Islington Assembly Hall

Design:

In-House Flown Rig

Technical Manager:

Tom Watt

Date:

05/03/2024

Version:

V5.6

Drawn By:

B.S

Scale:



N/A

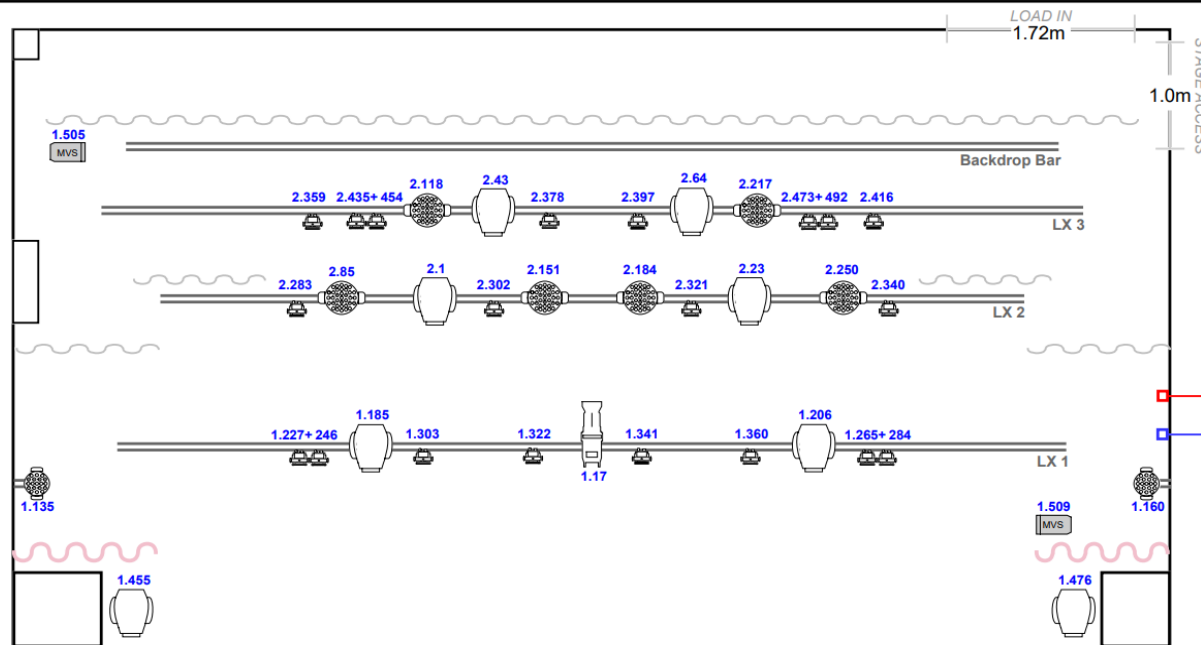
Dimensions / Distances:

US Black Drape - US Wall:	0.85m
Backdrop Bar - US Wall:	1.10m
LX 3 - US Wall:	1.70m
LX 2 - US Wall:	2.50m
LX 1 - US Wall:	3.90m
LX Bar Heights:	5.00m
DS Edge - US Wall:	6.10m
SL Wall - SR Wall:	10.70m
Proscenium Width:	9.30m
DS Edge - Balcony:	10.60m
Stage Height:	1.50m

This drawing is not to scale and should be used purely for illustrative purposes.

Fixture Key:

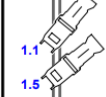
	Chauvet Rogue R2X Spot (21 Channel Mode)
	Martin MAC Quantum Wash (Extended' 33 Channel Mode)
	Martin ERA 400 Perf. WW (30 Channel Mode)
	Martin MAC Aura XB Wash (Extended' 25 Channel Mode)
	Martin ELP WW Profile 19° (4 Channel Mode)
	Martin VDO Atomic Dot (19 Channel Mode)
	Le Maitre MVS Hazer (4 Channel Mode)



FOH L Mid
SWL 100kg



FOH L Back
SWL 100kg

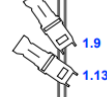


MIRRORBALL

FOH R Mid
SWL 100kg

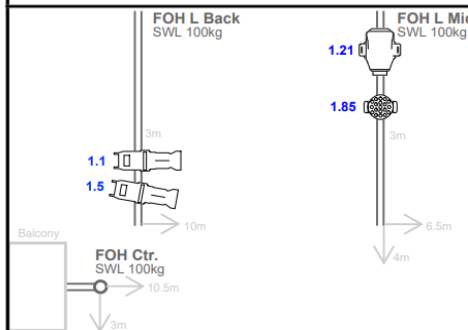


FOH R Back
SWL 100kg

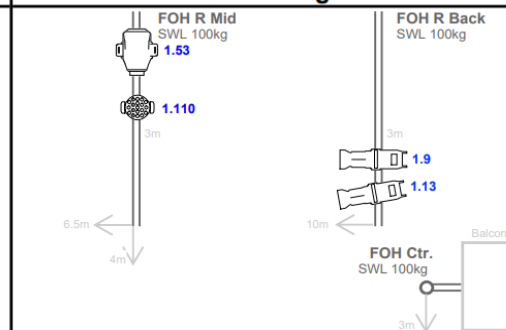


FOH Ctr.
SWL 100kg

Side View: Auditorium Left



Side View: Auditorium Right



Notes

No de-rigging of house fixtures or rigging to house bars without advance discussion with the venue.

All stage LX bars are on manually operated hand winches.

Hot power for all house fixtures is on 15 Amp Sockets.

Access to FOH mid & back LX bars via in-house powered Genie Lift. Please discuss with venue in advance if required.

FOH control position is located room centre on a 3m x 2m riser, below the FOH Ctr. lighting bar, partially overhung by balcony.

The Upstage drape is a pulley operated, centre split black wool serge which covers the load-in door, back wall and projection screen.

Stage LX bars SWL (UDL) 150kg. FOH LX bars SWL (UDL) 100kg.

ISLINGTON ASSEMBLY HALL - DMX PATCH - FEB 2022			
FIXTURE	DMX	MODE	LOCATION
Martin ELP WW LED Profile	1.1	4 CH	FOH HL
Martin ELP WW LED Profile	1.5	4 CH	FOH HL
Martin ELP WW LED Profile	1.9	4 CH	FOH HR
Martin ELP WW LED Profile	1.13	4 CH	FOH HR
Martin ELP WW LED Profile	1.17	4 CH	FOH
Martin ERA 400 Performance WW	1.21	30 CH	FOH HL
Martin ERA 400 Performance WW	1.53	30 CH	FOH HR
Martin MAC Aura XB	1.85	Extended	FOH HL
Martin MAC Aura XB	1.110	Extended	FOH HR
Martin MAC Aura XB	1.135	Extended	SR
Martin MAC Aura XB	1.160	Extended	SL
Chauvet R2 X Spot	1.185	21 DMX	LX 1
Chauvet R2 X Spot	1.206	21 DMX	LX 1
Chauvet R2 X Spot	2.1	21 DMX	LX 2
Chauvet R2 X Spot	2.22	21 DMX	LX 2
Chauvet R2 X Spot	2.43	21 DMX	LX 3
Chauvet R2 X Spot	2.64	21 DMX	LX 3
Chauvet R2 X Spot*	1.455	21 DMX	DSE, Floor
Chauvet R2 X Spot*	1.476	21 DMX	DSE, Floor
Martin MAC Quantum Wash	2.85	Extended 33 DMX	LX 2
Martin MAC Quantum Wash	2.118	Extended 33 DMX	LX 3
Martin MAC Quantum Wash	2.151	Extended 33 DMX	LX 2
Martin MAC Quantum Wash	2.184	Extended 33 DMX	LX 2
Martin MAC Quantum Wash	2.217	Extended 33 DMX	LX 3
Martin MAC Quantum Wash	2.250	Extended 33 DMX	LX 2
Martin VDO Atomic Dot WRM / blinder	1.227	19 CH	LX 1
Martin VDO Atomic Dot WRM / blinder	1.246	19 CH	LX 1
Martin VDO Atomic Dot WRM / blinder	1.265	19 CH	LX 1
Martin VDO Atomic Dot WRM / blinder	1.284	19 CH	LX 1
Martin VDO Atomic Dot WRM / blinder	2.435	19 CH	LX 3
Martin VDO Atomic Dot WRM / blinder	2.454	19 CH	LX 3
Martin VDO Atomic Dot WRM / blinder	2.473	19 CH	LX 3
Martin VDO Atomic Dot WRM / blinder	2.492	19 CH	LX 3
Martin VDO Atomic Dot WRM	1.303	19 CH	LX 1
Martin VDO Atomic Dot WRM	1.322	19 CH	LX 1
Martin VDO Atomic Dot WRM	1.341	19 CH	LX 1
Martin VDO Atomic Dot WRM	1.360	19 CH	LX 1
Martin VDO Atomic Dot WRM	2.283	19 CH	LX 2
Martin VDO Atomic Dot WRM	2.302	19 CH	LX 2
Martin VDO Atomic Dot WRM	2.321	19 CH	LX 2
Martin VDO Atomic Dot WRM	2.340	19 CH	LX 2
Martin VDO Atomic Dot WRM	2.359	19 CH	LX 3
Martin VDO Atomic Dot WRM	2.378	19 CH	LX 3
Martin VDO Atomic Dot WRM	2.397	19 CH	LX 3
Martin VDO Atomic Dot WRM	2.416	19 CH	LX 3
Le Maitre MVS Hazer	1.505	4 CH	Floor SR
Le Maitre MVS Hazer	1.509	4 CH	Floor SL

*Please note these aren't always available; contact us in advance if you would like to use them

Islington Assembly Hall – Streaming and Recording Facilities

(Not included in normal hire price; please email to discuss costs)

VIDEO

Cameras: 3 x Panasonic AW-HE42 WEJ PTZ

Remote camera controller: Panasonic AW-RP60GJ

Matrix: BlackMagic Smart Video Hub 20x20

Vision mixer: BlackMagic ATEM 1 M/E Production Studio 4K

Control surface: BlackMagic ATEM 1 M/E Advance Panel

Recording: BlackMagic Hyperdeck Studio 2

Monitor for vision mixer: 22" 16:9 HD Multiview Preview Monitor

Encoders: 2 x BlackMagic ATEM Mini Pro

The equipment is housed in a rack located in our video world (located stage left, basement).

AUDIO

Control: Allen & Heath i-Live (T112 surface) with IDR 48-channel mix rack.

(Connected to stage passive XLR split from multicore)

Monitors: 2x JBL 305P MKIIs.

(Please note that this equipment is only available for use if a house broadcast mix engineer is booked; please discuss in advance)

CABLING

We have HD SDI and CAT6 cables terminating at various locations around the hall which can easily facilitate the addition of extra cameras if needed (not included in the venue's package).

Locations:

Stage left

Stage right

Centre balcony

Rear of hall

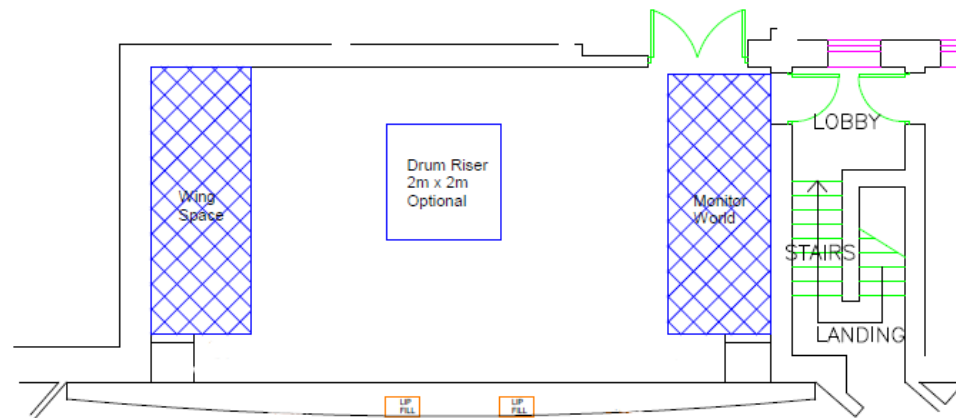
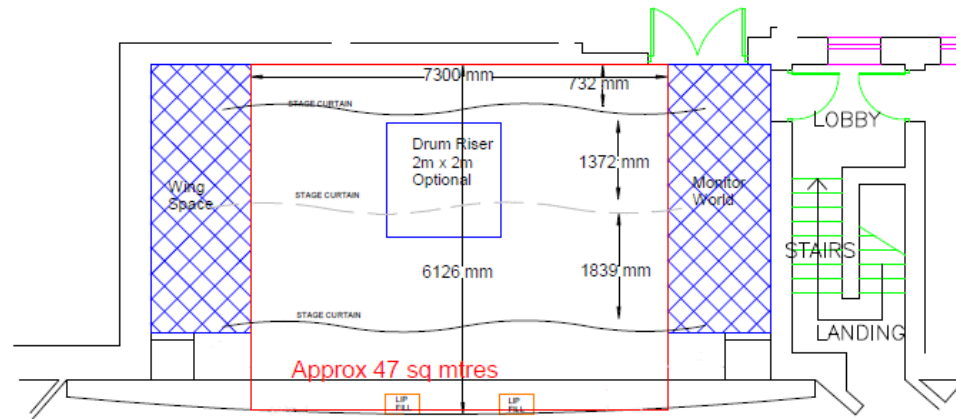
Hall left

Hall right

Projector room

Dressing room (Blue Room)

ISLINGTON ASSEMBLY HALL – STAGE PLAN



Notes
ALL DIMENSIONS TO BE CHECKED
ON-SITE PRIOR TO CONSTRUCTION
WORKS.
DO NOT SCALE FROM THIS DRAWING

Rev No	Date	Revisions
A		
B		
C		
D		
E		
F		
G		

Client ISLINGTON COUNCIL
Job Title ASSEMBLY HALL

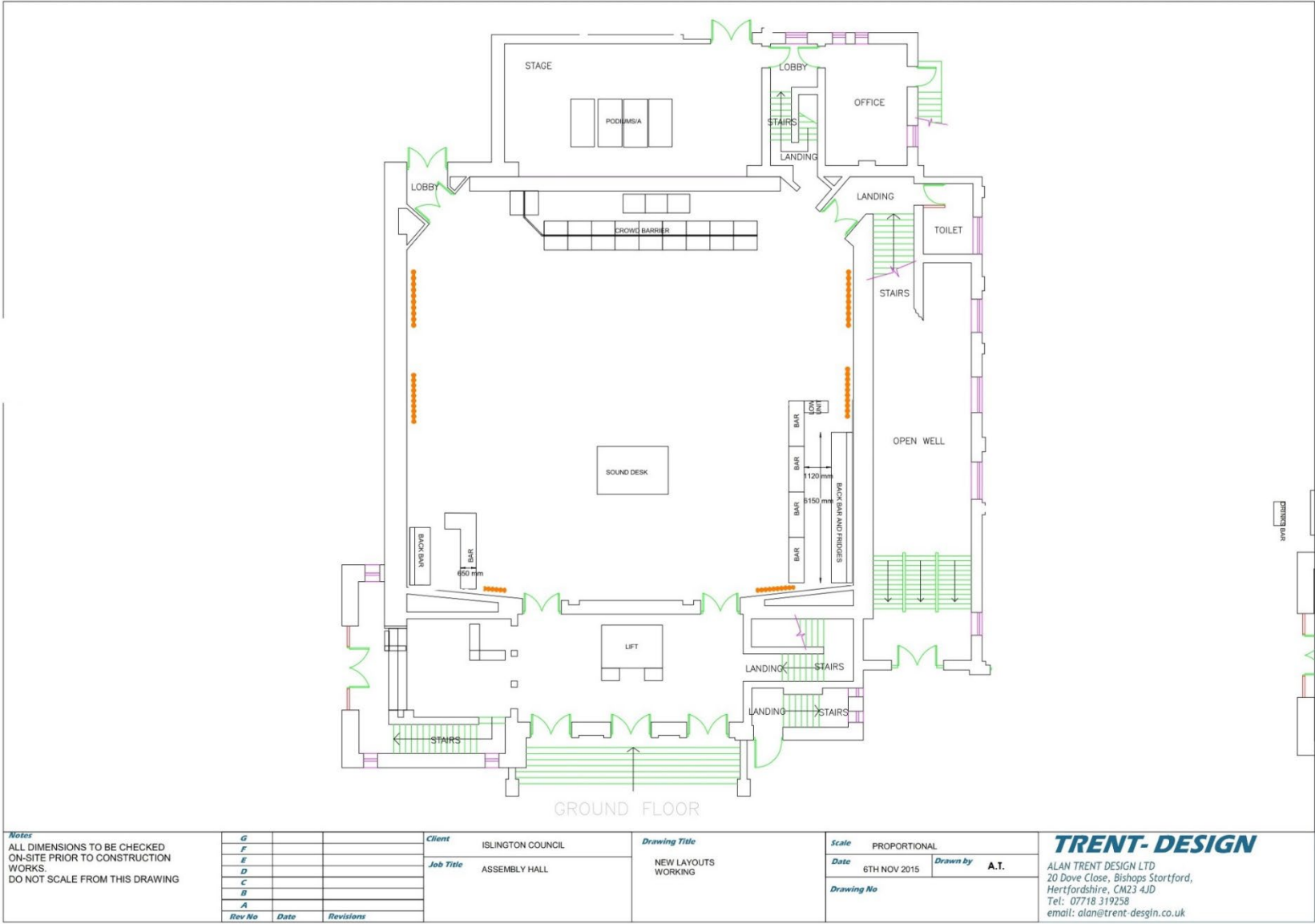
Drawing Title
STAGE

Scale PROPORTIONAL
Date 23RD JAN 2016
Drawn by A.T.
Drawing No

TRENT-DESIGN

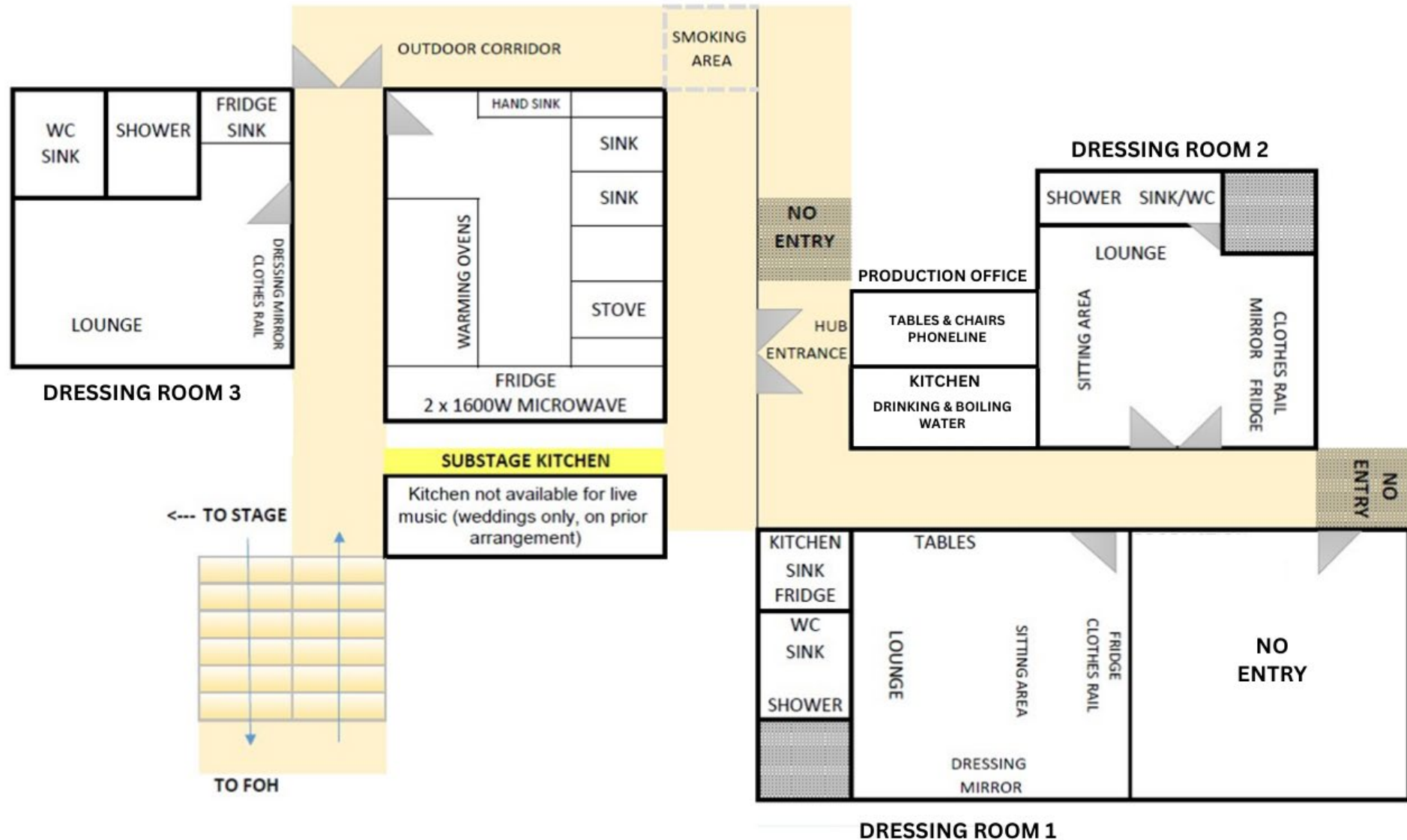
ALAN TRENT DESIGN LTD
20 Dove Close, Bishops Stortford,
Hertfordshire, CM23 4JD
Tel: 07718 319258
email: alan@trent-design.co.uk

ISLINGTON ASSEMBLY HALL – HALL PLANS



ISLINGTON ASSEMBLY HALL - DRESSING ROOM PLAN

ISLINGTON ASSEMBLY HALL - DRESSING ROOMS



ISLINGTON ASSEMBLY HALL - DRESSING ROOM PHOTOS





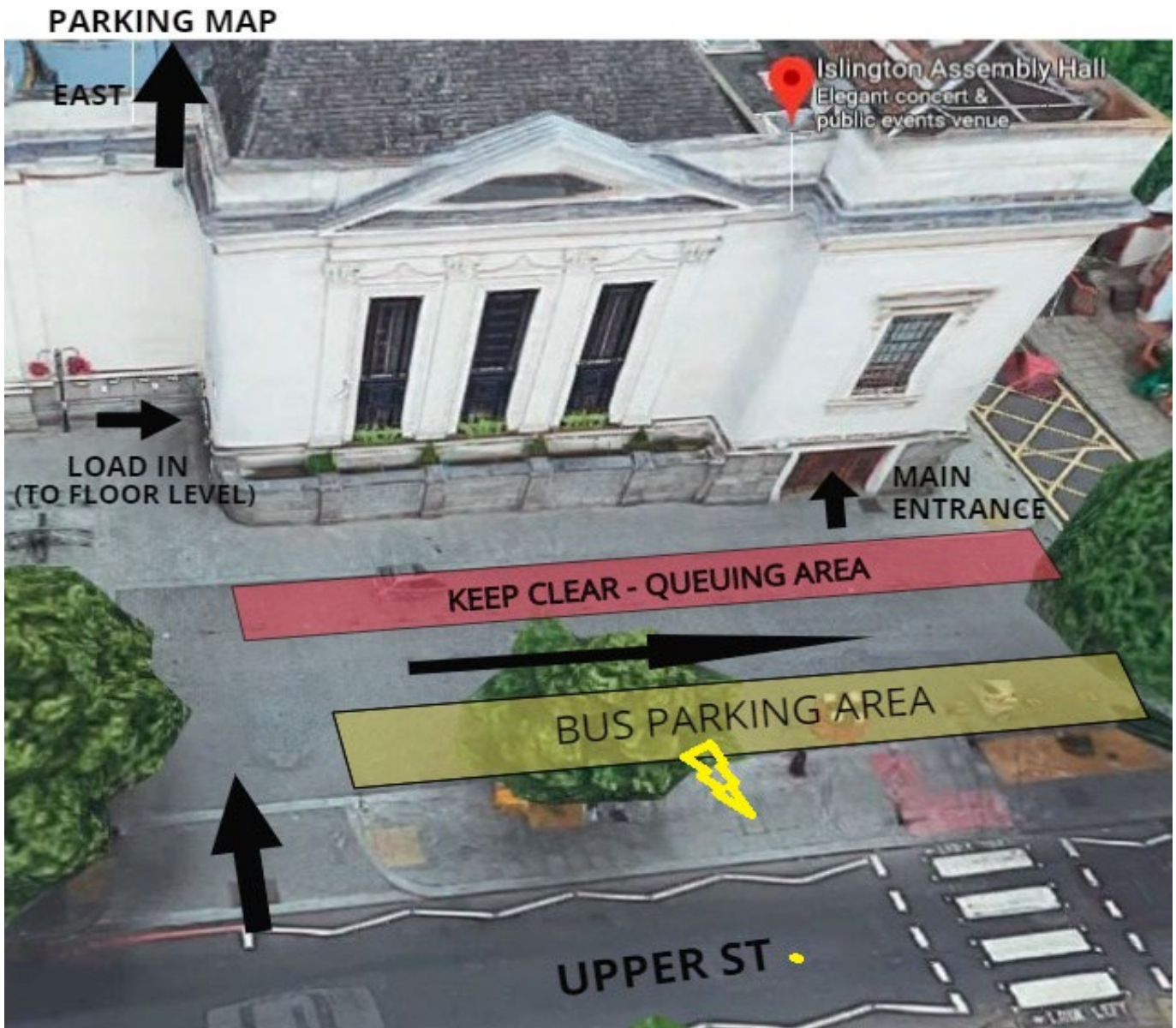
< From stage
FOH area >



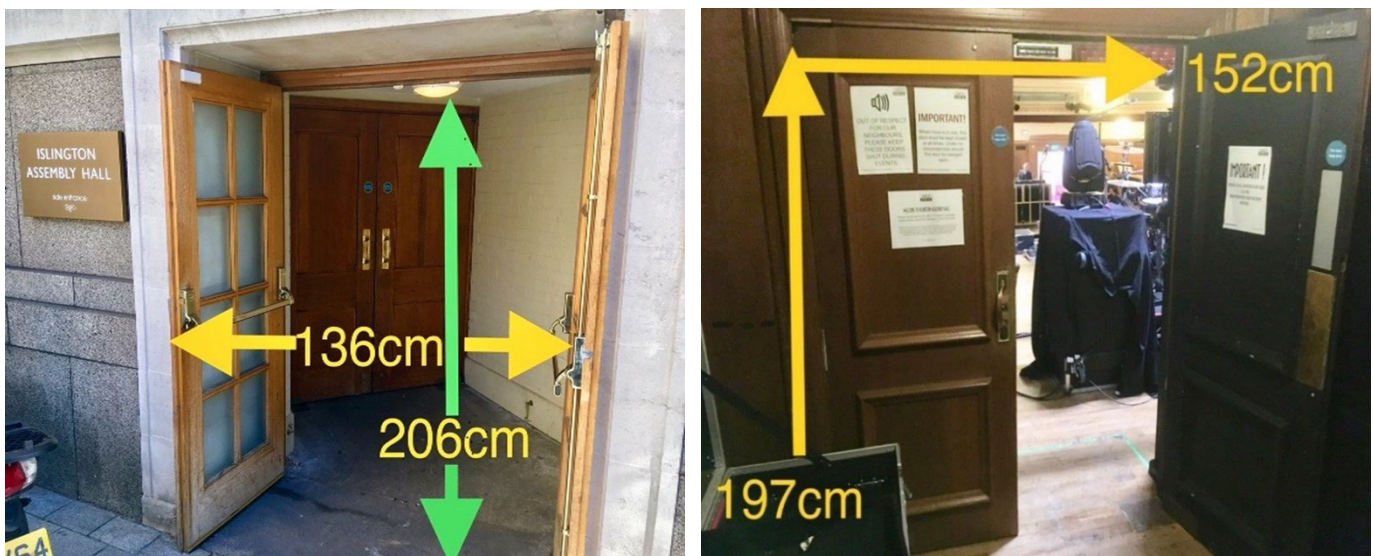
< FOH area
From balcony>



BUS PARKING INFO - PARKING MAP



LOAD IN DOOR DIMENSIONS (SIDE DOOR AND REAR OF STAGE)



BUS INFO

Please enter the parking area from Upper Street.

If you arrive overnight and the bollards are up please ring the doorbell at the main town hall entrance (left of the venue) and the security guard will drop them, it is staffed 24 hours a day.

It is important that you park on the side of the parking area closest to the road or the queuing area will be blocked and we won't be able to open the venue.

The load-in door on the map leads directly to the venue floor level. The ramp for the Town Hall entrance can be used for a step-free load into stage level; it is located to the left of the load in entrance.

32amp (single phase) power is available; it's in a silver box (see photo below)

Please ask for the padlock code ahead of arrival (currently 1929 but this may change).



EMERGENCY AND NON-EMERGENCY SHOW-STOP PROCEDURE

We use a traffic light system to communicate the show stop to audio engineers.
The security pit team will hold up the signs:

AMBER = After this song, cut all audio and raise lights

RED = Cut all audio and raise lights now

GREEN = Continue the show, the issue is resolved

Our duty manager will run through specific details on show day.

For evacuations our meeting point is the Shell garage on the corner of Florence Street & Upper St.